

LADIES IN MERCEDES

Salsa

STEVE SWALLOW

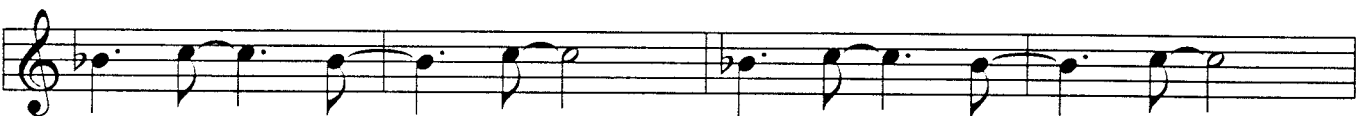
G Δ 7

C7



B m7

E7

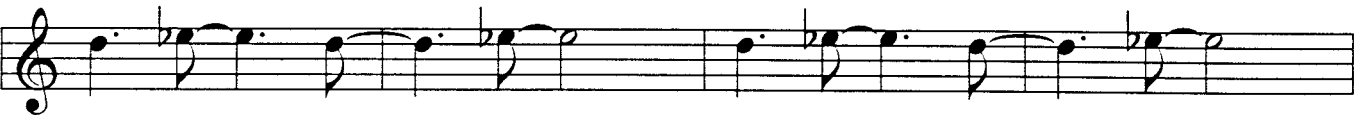
D \flat 7G \flat m7E \flat m7 \flat 5A \flat 7 \flat 9D \flat Δ 7G \flat 7

F m7

B \flat 7

G +7

C m7

A m7 \flat 5D7 \flat 9G Δ 7

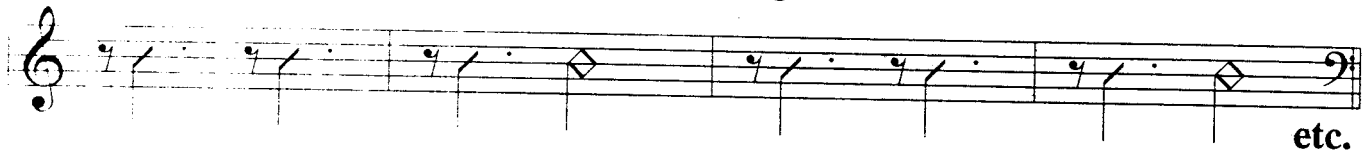
C7



LADIES IN MERCEDES (P. 2)

Piano Pattern

G⁷ C⁷



etc.

The Piano Pattern is written on a treble clef staff. It consists of six measures. The first measure is marked with a G⁷ chord and contains a quarter note G4, a quarter note B4, and a quarter note D5. The second measure contains a quarter note E5, a quarter note F5, and a quarter note G5. The third measure contains a quarter note A5, a quarter note B5, and a quarter note C6. The fourth measure contains a quarter note B5, a quarter note A5, and a quarter note G5. The fifth measure contains a quarter note F5, a quarter note E5, and a quarter note D5. The sixth measure contains a quarter note C5, a quarter note B4, and a quarter note A4. The pattern ends with a double bar line and the text "etc." below the staff.

Bass Pattern

G^{Δ7} C⁷ Bm⁷



etc.

The Bass Pattern is written on a bass clef staff. It consists of six measures. The first measure is marked with a G^{Δ7} chord and contains a quarter note G2, a quarter note B2, and a quarter note D3. The second measure contains a quarter note E2, a quarter note F2, and a quarter note G2. The third measure contains a quarter note A2, a quarter note B2, and a quarter note C3. The fourth measure contains a quarter note B2, a quarter note A2, and a quarter note G2. The fifth measure contains a quarter note F2, a quarter note E2, and a quarter note D2. The sixth measure contains a quarter note C2, a quarter note B1, and a quarter note A1. The pattern ends with a double bar line and the text "etc." below the staff.